



Cherubim Detail Functions

→ Main Window Structure

Detail Function

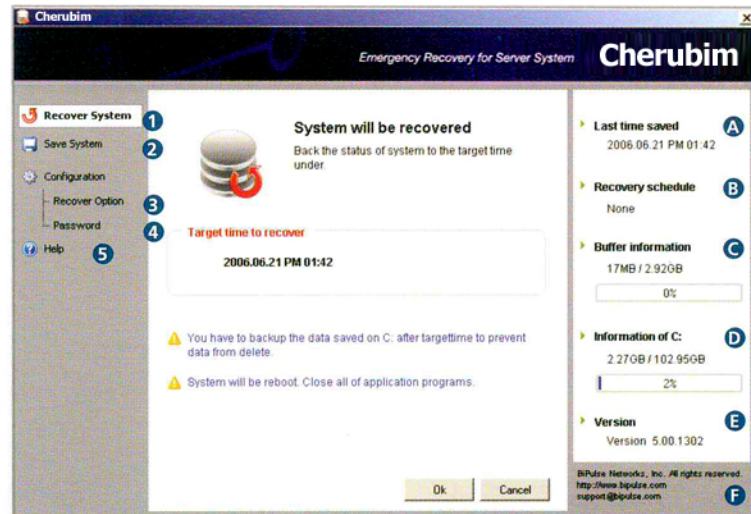
1 sec recovery from server system failure/down ①

Perform update at patch or New installation ②

Automatic recovery at preset Schedule(at the 1st booting after preset interval) ③

Register/change password ④

Provide Help Desk ⑤



System Information

A Last time of update

B Preset recovery cycle time

C Show usage of virtual storage

D Show usage of C: drive

E Present version

F Product Copyright information

→ Cherubim Detail Functions



System Recovery

Optimum system status can be Immediate recovery of system failure or down caused by virus, hacking, or error in patch or installation.



Automatic recovery schedule

Setup automatic recovery schedule
For regular system recovery, automatic recovery schedule is setup according to the rebooting schedule. Rebooting can complete the recovery. Making server management easy and simple.



Save present status

Save present update.
When the system patch or installation is verified to be safe, save present update status. Safe update test environment is provided.



Register password

Register/change password.
Cherubim is a system management S/W program, which require password. Password must be controlled securely.

→ Tray Icon Information



Inform system status(normal)

Buffer usage is normal.

System management status is normal. The system can be maintained as it is for sometime. Present status can be saved.



Inform system status(caution)

Take care for the buffer usage rate

System management status requires caution. Stabilize system by system recovery or save present status command.



Inform system status(alarm)

Buffer usage rate is at critical state

System management status is in dangerous level. System recovery must be carried out. Refrain from saving present status, otherwise, system error can be caused.